



KEYCREATOR™



KEYCREATOR AND EXPERT MOLD DESIGNER MODULE

Cornerstone Technology, in partnership with Kubotek, delivers the fully-integrated Expert Mold Designer, XMD, exclusively for KeyCreator software – to significantly shorten overall design time.

This robust, automated solution draws, manages, understands and even checks the hundreds of details of your mold base – helping customers substantially increase efficiency of mold design and manufacture.

au•to•ma•tion n.[1 automatic]

1. the act of implementing the control of a process with advanced technology – see XMD.

XMD (Expert Mold Designer) is an Automated Knowledge-Based Mold Design Solution that is fully integrated into Kubotek KeyCreator software. More than a library of components, the XMD solution automatically draws, manages, understands and checks your work. This powerful automation capability reduces lead times, reduces duplication of tasks, reduces hours, and arguably most importantly, helps reduce your risk of errors. XMD frees designers by automating the tedious work of modeling and managing a design, giving them the time they need to engineer better molds and superior products.

SHORTER LEAD TIMES

With XMD you'll radically reduce overall design time. We took a long hard look at the processes and steps involved in mold design; from preliminary mock-up, efficient cooling design and ejection, to finished 3D models and fully-detailed drawings. We developed XMD to help cut design time every step of the way. In fact, you will reduce your overall design hours by 30% to 70%, guaranteed!

HIGHER QUALITY

With XMD, you'll know it's right. XMD is completely associative. That means reduced errors because any changes you make are automatically updated everywhere: 3D, assembly drawings, BOM and details. You know they are up to date. XMD also has powerful tools to check not only if components collide, but also if they get too close.

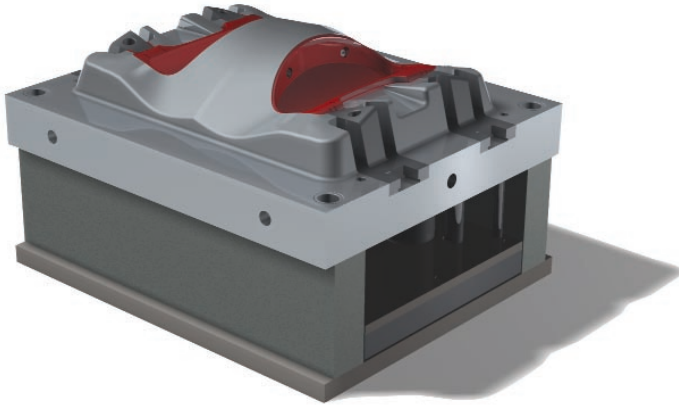
XMD even has tools to ensure your waterlines stay a specified safe distance from your part surfaces. Using a system like XMD that catches mistakes before they go into steel will have a huge impact on the quality of product you deliver and the speed at which you can deliver it.

LOWER COSTS

With XMD you'll increase competitiveness in today's global market. XMD gives you the tools to reduce costs, reduce errors and increase productivity. All these benefits add up to one thing, competitive advantage – reducing your costs and turnaround time while upgrading your quality.

I cannot say enough what a time saver it is to develop and design in 3D using XMD and KeyCreator. We can now change with our customer's demands and improve the design as it develops to completion. It is effortless once you learn to use the solid tools supplied in KeyCreator combined with the new 3D enhancement tools in XMD.

TIM ATKINS
BERNARD MOLD
ENGINEERING MANAGER



KeyCreator and XMD were used to design and manufacture the mold for this two-cavity automotive instrument panel frame.

HAVING DATA TRANSLATION ISSUES?

XMD has direct input for CATIA V4 or V5, UNIGRAPHICS, Pro/ENGINEER, Autodesk Inventor, SolidWorks, DXF, DWG, IGES, STEP, PRT, CKD, STL files and more so you can work on every part you receive – no matter what program it was started in. XMD works with imported data with no loss of functionality over native data! No fixing, no healing; just read it in and GO!

IS OLD SCHOOL STILL YOUR SCHOOL?

XMD is a fully 3D Automated mold design package, however we have not forgotten our roots. If you still enjoy working in 2D, XMD will automatically develop the 3D for you. By the way if you do work in 3D, XMD will automatically develop the 2D drawings. How's that for flexibility?

NEED VENDORS?

XMD includes DME, DMS, Hasco, FACE, BMS, CARR Lane, Progressive, PCS, National, Anchor Lamina, all in inch and metric. You can even mix vendors' inch and metric on the fly in the same job!

LIKE TO BE A LITTLE DIFFERENT?

XMD allows you to configure just about everything from your specific Title Block right down to what size clearance holes you put around each size of component.

With the ongoing demand of competitive pricing and delivery, XMD allows us to achieve those possibilities and more. From quick preliminary block outs for steel approval to complete final design and even full 3D plates for machining.

TOM DIGIOVANNI
ENGINEERING MANAGER
INTEGRITY TOOL & MOLD INC.

BOM: BILL OF MATERIAL OR BIG OLD MESS?

XMD keeps track of sizes, quantity and catalogue #'s of everything in your design. XMD will automatically create the BOM in your design. A few more clicks and your design is Ballooned. The BOM is exportable to Excel and other popular formats.

WATER GOT YOU ALL WET?

XMD has an incredible palette of water tools that allows you to maximize cooling with minimal effort. XMD's interference checking tools also help you verify there are no risks of leaks.

SICK OF PROMISES THAT NEVER MATERIALIZE?

XMD is a time-proven solution for mold design that has been helping hundreds of automotive suppliers in the Detroit, MI/Windsor, ON area for 10 years. XMD will save you time and money, and pay for itself in just a few jobs We guarantee it! Contact us today for more information on our R.O.I. (Return on Investment) guarantee.

KUBOTEK®

CORNERSTONE
 TECHNOLOGY INC.™

KUBOTEKUSA.COM

KUBOTEK USA, INC. • 100 LOCKE DRIVE • MARLBOROUGH, MA 01752
 800.372.3872 • 508.229.2020 • 508.229.2121 FAX

©2005 KUBOTEK USA, INC. ALL RIGHTS RESERVED. KUBOTEK AND CADKEY ARE REGISTERED TRADEMARKS OF KUBOTEK CORPORATION. KEYCREATOR IS A TRADEMARK OF KUBOTEK CORPORATION. XMD AND EXPERT MOLD DESIGNER ARE REGISTERED TRADEMARKS AND CORNERSTONE TECHNOLOGY IS A TRADEMARK OF CORNERSTONE TECHNOLOGY INC. ALL RIGHTS RESERVED. ALL OTHER TRADEMARKS CONTAINED HEREIN ARE THE PROPERTIES OF THEIR RESPECTIVE OWNERS.